

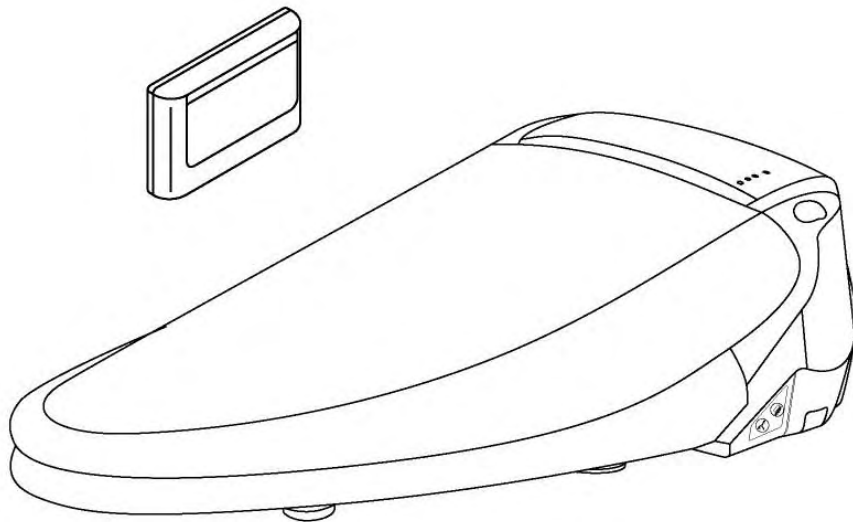


# Swash™ 700 / 800

high-tech toilet seat

## OWNER'S MANUAL

**Round** S700-RW, S700-RB, S800-RW, S800-RB  
**Elongated** S700-EW, S700-EB, S800-EW, S800-EB



**This manual contains important safety information.  
Please read it carefully before product installation or use.**

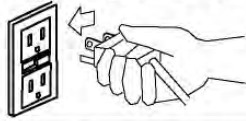


# Important Safeguards



For safety reasons, please read this entire manual before use.

**Danger - Possibility of Electric Shock!**  
Use the correct voltage according to the Specifications and connect to a three prong GFCI grounded outlet.



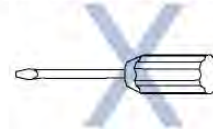
Do not use harsh brushes or abrasive detergents to clean the Swash. Use only mild soap and a soft cloth for cleaning.



Please use caution and avoid spraying water directly on the Swash or power cord. This could result in electric shock or fire.



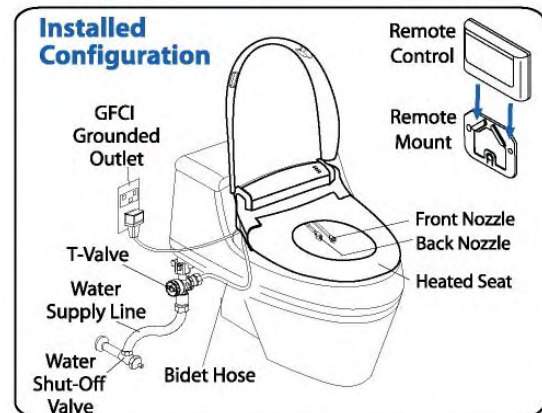
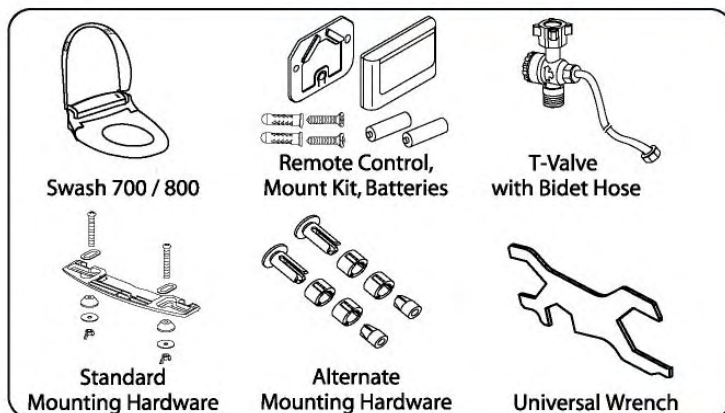
Do not disassemble or modify the Swash. Only an authorized service representative should perform repairs.



## Specifications

Model	S700-RW, S700-RB S800-RW, S800-RB	S700-EW, S700-EB S800-EW, S800-EB
Rated Power Source	AC 120V 60Hz 1400W	
Tap Water Pressure	0.5-7.5 kgf/cm <sup>2</sup> (7 - 106 psi)	
Rated Power Consumption	1.5 kwh	
Seat Temperature	<b>OFF:</b> room temperature <b>LOW:</b> 35°C (97°F) <b>MED:</b> 38°C (100°F) <b>HIGH:</b> 40°C (104°F)	
Seat & Lid	Soft Closing	
Maximum Spray Volume	0.72 liter / min (0.2 gal / min)	
Water Temperature	<b>OFF:</b> room temperature <b>LOW:</b> 35°C (97°F) <b>MED:</b> 38°C (100°F) <b>HIGH:</b> 40°C (104°F)	
Dryer Temperature	<b>LOW / MED / HIGH</b> (available in Swash 800)	
Electrical Safety Protection	15 mA - GFCI	
Power Cord Length	1.2 m (4 ft)	
Product Dimensions	15"W x 19"L x 6" H 383mm W x 483mm L x 153mm H	15"W x 20.1"L x 6" H 383mm W x 511mm L x 153mm H
Product Weight	4.3 kg (9.5 lbs)	4.4 kg (9.7lbs)

## Parts & Configuration



Typical install time: 30-60 minutes



# Before Installation

## Tools Needed

- Flat head screwdriver
- Phillips screwdriver
- Universal Wrench (included)
- Measuring tape

**NOTE:** The included Universal Wrench will work for most applications. Depending on your toilet configuration, an adjustable wrench may also be needed.

## Alternate Mounting Hardware

Some toilets may not provide adequate access to the seat mounting holes preventing proper installation of the Standard Mounting Hardware.

In this case, you will need to use the Alternate Mounting Hardware and follow the enclosed instructions.

## Check Water Supply Line

Check the line that connects the toilet tank to the water shut off valve. If it is a rigid pipe, you may need to purchase a flexible hose to replace it before installing the Swash. The length of the hose and the size of the connectors will vary.

# Installation



Please read these instructions carefully before installing the Swash 700 / 800. Failure to do so could result in flooding, leaking, or damage to the product.



CAUTION

## 1) Remove Toilet Seat

- Lift hinge covers and use a screwdriver to remove the mounting bolts.
- Remove the toilet seat.

Steps may vary by type of seat.

## 2) Turn Water Off and Flush Toilet

You may wish to place a container under the tank to catch any leaking that could occur during installation.

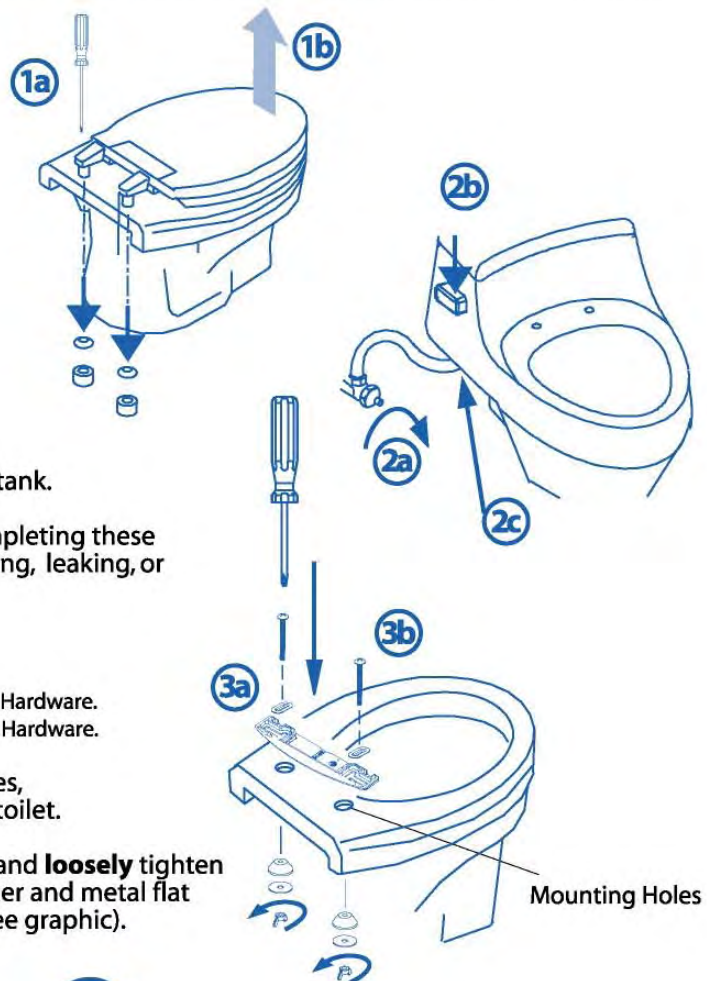
- Turn water valve off completely.
- Flush the toilet to empty the tank.
- Disconnect water supply line from toilet tank.

**IMPORTANT:** Do not continue without completing these steps! Failure to do so could result in flooding, leaking, or damage to the product.

## 3) Install Mounting Plate

**NOTE:** These instructions are for Standard Mounting Hardware. See page 2 for further details on Alternate Mounting Hardware.

- Place Mounting Plate over mounting holes, flat side down, curve toward the back of toilet.
- Insert bolts through the Mounting Plate and **loosely** tighten the wingnuts. Make sure the crush washer and metal flat washer are put on in the correct order (see graphic).



# Installation (continued)

## 3) Install Mounting Plate (continued)

c) Adjust mounting plate so length (L) between the front of the toilet bowl and the back of the mounting plate is as follows:

(S700 / S800 - RW & RB) L = 18 1/4" (465 mm)

(S700 / S800 - EW & EB) L = 20 1/2" (495 mm)

d) Tighten Mounting Bolts with screwdriver until the mounting plate is securely fastened to the toilet.



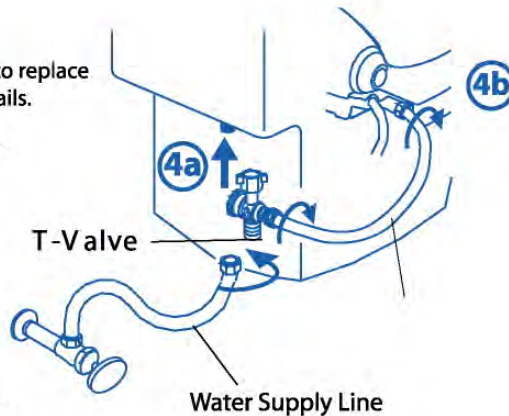
## 4) Connect T-Valve and Hoses

If your water supply line is rigid, you may need to replace it before continuing. See page 2 for further details.

a) Install the T-Valve between the water supply line & the toilet tank.

b) Place the Swash on or beside the toilet and connect the Bidet Hose to the Swash.

**IMPORTANT!** Use wrench to tighten all connections before continuing. Failure to do so could result in flooding, leaking, or damage to the product.



## 5) Attach the Swash 700 / 800

Slide the Swash onto the mounting plate.

You will hear a "click" indicating the seat has been properly attached.

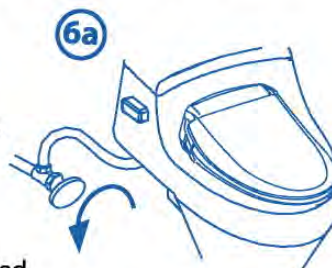
**To release the Swash:** push the button located on the right hand corner of the seat and gently pull.



## 6) Turn On Water and Connect Power

a) Turn the water valve back on slowly. Ensure the connections are not leaking before continuing.

b) Make sure hands are dry. Insert the power plug into a grounded GFCI outlet. The blue power LED will illuminate.

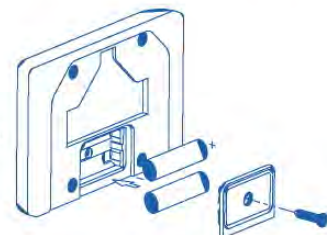


**CAUTION: Only use a grounded GFCI outlet!**



## 7) Battery Installation

Load two (2) AAA batteries (included) into Remote Control as shown. Tighten battery cover with screw.





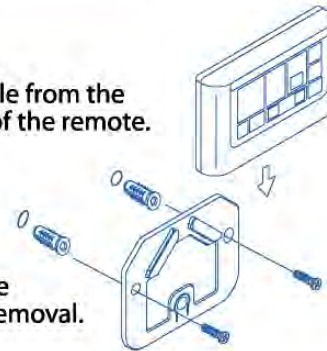
## Installation (continued)

### 8) Remote Control Installation

Identify a location for the Remote Control that is visible and reachable from the toilet and that does not obstruct the IR signal coming from the top of the remote.

Depending on your wall type, you can install the screws directly or use the anchor mounts as shown.

If you prefer to not drill holes into your wall, you may use double sided foam tape to adhere bracket to the wall. In this case, make sure to choose a tape with an adhesive that will not damage wall upon removal.



### 9) Filling the Reservoir

Sit on the Swash to activate the seat switch. Press one of the wash functions on the remote control. The reservoir will begin to fill. It will take between 10 to 20 seconds for the reservoir to fill completely.

When the reservoir is full, the wash wand will extend and begin to spray. Push STOP to cancel the wash function.

Your Swash is now ready for use!

## Troubleshooting

	Issue	Possible Causes	Solution
1	Low water flow or pressure	1) Clogged filter 2) Twisted hose 3) Household water pressure low	1) Clean filter 2) Straighten the hose 3) Increase water pressure to Swash
2	Nozzles do not function properly	1) Nozzles are dirty 2) Clogged filter 3) Water pressure is too low	1) Clean the nozzles 2) Clean the filters 3) Adjust water pressure
3	Nozzles fail to retract	Nozzles are dirty	Clean the nozzles
4	Washing feature does not work or fails to spray	1) User not properly seated 2) Seat Switch not contacting toilet fixture correctly	1) Adjust your sitting position 2) Make sure seat switch is contacting toilet bowl (switch is in seat foot)
5	Product shuts off during use	1) Washing time exceeded 5 minutes 2) Power failure	1) Repeat Cleaning function 2) Check power and/or unplug the cord to reset
6	Seat not heated	Seat temperature set to off	Reset heated seat temperature
7	Water not heated	Water temperature set to off	Reset heated water temperature
8	Water flow sporadic or inconsistent	Pulsating / Spa mode activated	Reset to normal washing mode
9	Dryer not working (available in Swash 800)	Dryer only operates when activated by weight of person	Sit on product to operate Dryer

# Operation

Some features of the Swash 700 / 800 are designed to function only when seats occupied

**Swash 700**

**Swash 800**

**Remote Control Panel**

1	LCD Panel
2	Posterior (Rear) Cleansing
3	Feminine (Front) Cleansing
4	Water Temperature low>med>high >off
5	Seat Temperature low>med>high >off
6	Power Save Function
7	Stop (for Wash and Dryer)
8	Decrease Water Pressure
9	Increase Water Pressure
10	Warm Air Dryer low>med>high

**DISPLAY PANEL**

Swash 700 / 800

- power
- power save
- seat heat
- seat sensor

**AUXILIARY CONTROLS**  
(backup for Remote)

AUX Wash    AUX Stop

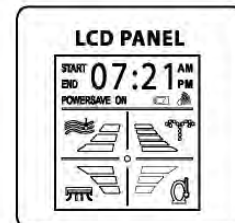
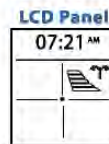
## Using the Swash 700 / 800

### Warm Water Washing:

Sit on the seat and press the FRONT or BACK (either HIM or HER) button to begin water flow. Press the STOP button to discontinue the water flow.

### Water Flow/Pressure Adjustment:

Press the **+** button to increase pressure or the **-** button to decrease pressure. Repeat until desired pressure is reached. There are five levels of water pressure. Each wider bar on the LCD display represents one level increase.



### Pulsating Water Mode: (water pressure level must be at 3 or above)

To change to pulsating mode, press and hold the FRONT or BACK button for over 3 seconds. To deactivate and return to normal washing mode, repeat the above step.

### Warm Air Dryer: (available in Swash 800)

Press the WARM AIR button to start the dryer. Press STOP to stop the dryer.

## Adjusting Seat, Water, and Dryer Temperature

### Adjusting Seat Temperature

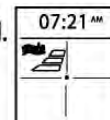
Press SEAT TEMP button to adjust temperature. Repeat until desired level is achieved. There are four temperature levels: **low>medium>high>off** No LCD graphic indicates seat heating is off. Each wider bar on the LCD display represents one level increase.

View of LCD Panel



### Adjusting Water Temperature

Press WATER TEMP button to adjust temperature. Repeat until desired level is achieved. There are four temperature levels: **low>medium>high>off** No LCD graphic indicates seat heating is off. Each wider bar on the LCD display represents one level increase.



### Adjusting Warm Air Dryer Temperature (available in Swash 800)

Press WARM AIR button to adjust temperature. Repeat until desired level is achieved. There are three temperature levels: **low>medium>high** Each wider bar on the LCD display represents one level increase.



NOTE: Temperature settings are stored in memory according to last settings



# Operation (continued)

## Setting the Clock

Press and hold the STOP button on the Remote Control for over 5 seconds until the Clock flashes. Use the **-** button to set the Hour and the **+** button to set the Minutes.

When finished, press the STOP button or simply do not press any buttons for 10 seconds.

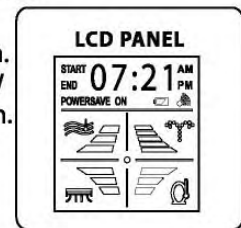
## Power Save Mode

The Swash 700 / 800 i includes a power saving feature to reduce electrical consumption when not in use. Once set, the Powersave function turns the Swash on and off each day according to your time settings.

### Setting Powersave Start and End Times

- Press the Powersave button on the remote control for 5 seconds. "POWERSAVE START" on the remote and the Powersave LED on the Swash will flash.
- Set the Powersave start time using **-** WATER FLOW for hours and **+** WATER FLOW for minutes. When the desired start time is displayed, press the Powersave button.
- "POWERSAVE END" on the remote and the Powersave LED on the Swash will flash. Set the Powersave end time using **-** WATER FLOW for hours and **+** WATER FLOW for minutes. When the desired end time is displayed, press the Powersave button.

The remote LCD will show POWERSAVE and the Powersave LED on the seat will be green. Powersave is now armed and the unit will go into power save mode at the specified start time.



### Enabling and Disabling Powersave

- Press POWERSAVE to toggle between Powersave enabled and Powersave disabled.
- To change Powersave Start and End times, hold POWERSAVE for 5 seconds and repeat procedure above.

### When Powersave is Operating

- When the Swash is in Powersave mode, the associated LED on the seat will glow Orange
- Sitting on the Swash while it is in Powersave mode will return the unit to normal operation.
- The Swash will not re-enter Powersave mode until the next day's scheduled start time

## Auxiliary Controls

There are two buttons on the rear, right corner of the Swash 700 / 800 for use when the Remote Control is unavailable.



**Rear Wash:** Sit on the seat and press the AUX WASH button to begin water flow (only posterior cleaning is available when using Auxiliary Controls).

**Water Pressure:** Press again the AUX WASH button until desired water pressure is achieved. Press the AUX STOP button to discontinue the water flow.

**Warm Air Dryer** (available in Swash 800): Press the AUX STOP button to activate Warm Air Dryer. It will automatically be set to the medium temperature level. Press AUX STOP to turn off the Dryer.

**Seat Temperature:** To adjust Seat Temperature, press and hold the AUX STOP button for more than 5 seconds. Press AUX STOP button again to change seat temperature: **Low>Medium>High>Off**

**Water Temperature:** To adjust Water Temperature, press and hold the AUX WASH button for more than 5 seconds. Press AUX WASH button again to adjust water temperature: **Low>Medium>High>Off**

## Remote Control Beeping/Silent Modes

The Remote Control has two modes: **Beeping Mode** and **Silent Mode**.

Beeping Mode beeps to confirm when a command from the remote has successfully been received by the seat. To change modes press and hold the WATER TEMP button for 5 seconds.

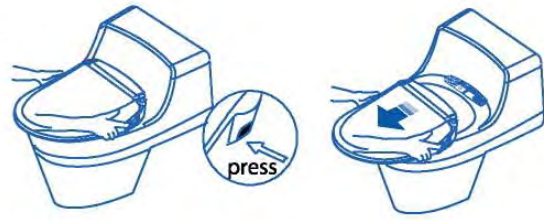
# Maintenance

**Always unplug the Swash before cleaning!**

## Seat Cleaning and Removal

Use a soft, damp cloth and mild cleanser (such as dish soap) to wipe down the seat. DO NOT scrub or use harsh, abrasive products to clean the Swash.

For a more thorough cleaning, you may remove the Swash. To release, push the button located on the back right side of the seat and pull forward.



## Nozzle Cleaning

It is recommended that you clean the retractable nozzles monthly or as necessary. To clean the nozzles, pull them out gently and use a soft, damp brush or cloth to wipe down. DO NOT use soap or detergents to clean the nozzles.



## Filter Cleaning

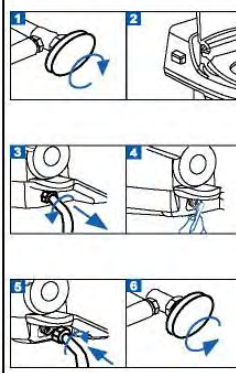
For proper Swash 700 / 800 function, it is important to occasionally clean the filters. Frequency of cleaning depends on your local water supply. Clogged filters cause decreased water flow, affecting operation.

### T-VALVE FILTER:



- 1) Turn water valve off completely.
- 2) Flush the toilet to empty the water tank. (Failure to do so could result in leaking or flooding!)
- 3) Unscrew the filter from the T-Valve. (the end not connected to a hose)
- 4) Gently brush and clean the filter with water to remove build-up.
- 5) Reconnect the filter to the T-Valve.
- 6) Turn the water valve back on.

### BIDET-HOSE FILTER:



- 1) Turn water valve off completely.
- 2) Flush the toilet to empty the water tank. (Failure to do so could result in leaking or flooding!)
- 3) Disconnect the Bidet Hose from the Swash.
- 4) Gently brush and clean the filter with water to remove build-up.
- 5) Reconnect the Bidet Hose to the Swash.
- 6) Turn the water valve back on.

**For other issues or questions, contact Brondell Customer Service:  
1-888-542-3355**

## Contact Information

Brondell Inc.  
PO Box 470085  
San Francisco, CA 94147-0085

Phone: 1-888-542-3355  
E-mail: support@brondell.com  
WEB: www.brondell.com

## Warranty

Please refer to the Warranty Card enclosed with the purchase of the Swash, or go on-line at [www.brondell.com](http://www.brondell.com) for warranty detail.