



Account Number 6979321000
 Bill Date Jan 13, 2026

Previous Balance \$200.18
 Payment Received -\$217.50
 Balance Forward -\$17.32
 Current Charges \$404.74

Summary of your current charges

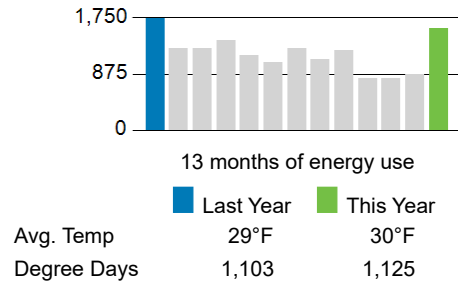
Account Name: CREATIVE INVESTMENTS
Next Meter Reading: Feb 06, 2026 - Feb 11, 2026
Service Address: 806 N 4TH ST
 FAIRFIELD, IA 52556

Amount Due on Feb 02, 2026
\$387.42

Electric
\$257.23
Electric Meter: 500400382
Meter Reading
 Jan 09 41,207
 Dec 08 39,614

 1,593 kWh

Your Electric Usage (in kWh)



Questions? Contact us at:

- alliantenergy.com
- 1.800.ALLIANT
(1.800.255.4268)
- P.O. Box 3060
Cedar Rapids IA 52406-3060

Take care of it online

You can pay your bill, view your energy use and sign up for payments options in My Account at alliantenergy.com/myaccount

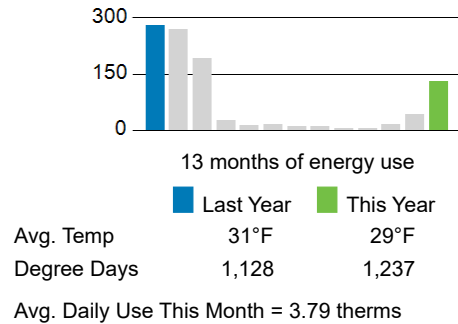
Gas
\$139.93
Gas Meter: 454016174
Meter Reading
 Jan 08 3,594 (Estimated)
 Dec 05 3,472 (Estimated)

 122 CCF

Heat Factor Adjustment
 122 CCF
 X 1.054

 129 therms

Your Gas Usage (in therms)



Stress less about energy bills. Sign up for Automatic Payment in My Account. Learn more at alliantenergy.com/automaticpayment.

Amount Due

(See page 2 for details of charges)

Please return this portion with your payment.



PO Box 351
 Cedar Rapids, IA 52406 - 0351

Amount Due	Feb 02, 2026	\$	387.42
Amount enclosed if Different From Above		\$	_____

Please Do Not Write In Area Below.

Account Number 6979321000

CREATIVE INVESTMENTS
 806 N 4TH ST
 FAIRFIELD IA 52556

ALLIANT ENERGY/IPL
 PO BOX 3060
 CEDAR RAPIDS IA 52406-3060

69793210000000000000003874200000000003874216

AB20260113200228.028.PRD.XML



Message Board

Questions? Contact us at:

PO Box 3060
Cedar Rapids, IA 52406-3060
Toll-free: 1-800-255-4268

THANK YOU FOR YOUR PAYMENT

Payment Received	Jan 02, 2026	-\$2.39
Payment Received	Jan 02, 2026	-\$147.28
Payment Received	Jan 02, 2026	-\$35.27
Payment Received	Jan 02, 2026	-\$32.56
Total Payments		-\$217.50

Payment Arrangement

Original Amount	\$1,369.01	Date Plan Began	August 12, 2025
Total Payments / Credits	-\$114.10	Remaining Payments	55
Remaining Balance	\$1,254.91	Payment Amount	\$22.82
Total Current Charges			\$22.82

Credit Transfer Adjustment	Jan 13	\$	-22.82
----------------------------	--------	----	--------

Residential Electric Service

Rate: 400 - Electric Residential

Billed for: 32 Days

Billing Period	Meter Number	Current Reading	Previous Reading	Metered Units	Multiplier	Usage
Dec 08 - Jan 09	500400382	41,207	39,614	1,593 kWh	1	1,593 kWh

Winter Energy	1593.000 kWh X \$0.09992	\$159.17
Energy Cost	1593.000 kWh X \$0.00066	\$1.05
Energy Efficiency Programs Charge	1593.000 kWh X \$0.0006	\$0.96
Demand Response Programs Charge	1593.000 kWh X \$0.0048	\$7.65
Regional Transmission Service	1593.000 kWh X \$0.04055	\$64.60
Basic Service Charge	32.000 Days X \$0.5096	\$16.31
Franchise Fee	\$249.74 X 3%	\$7.49
Total Current Charges		\$257.23

Credit Transfer Adjustment	Jan 13	\$	-6.31
----------------------------	--------	----	-------

If you have a complaint, we want to resolve the issue as quickly as possible. If Alliant Energy does not resolve your complaint, you may request assistance from the Iowa Utilities Commission by calling (515) 725-7300 or toll-free 1-877-565-4450, or by writing to 1375 E. Court Avenue Des Moines, Iowa 50319, or by email to customer@iuc.iowa.gov. You may view tariff and rate schedule information on our website at alliantenergy.com or request to view the information from our corporate office.

If you have a tough time paying your energy bill, help is available. Visit alliantenergy.com/energyassistance for resources to get back on track.

Your bill is based on estimated usage, which can happen for various reasons. Learn more by calling us at 1-800-ALLIANT. We are available 7 a.m. to 7 p.m. Monday through Friday.



Find energy-saving offers online.
alliantenergy.com/energysavingoffers

Interstate Power and Light, an Alliant Energy Company

Please recycle

Message Board:

Paying by check? Go to alliantenergy.com or call us at 1-800-ALLIANT (800-255-4268) to make a payment with no fee. Paying by credit card? Go to alliantenergy.com to make a payment with no fee. You can also use Speedpay by calling 1-877-429-4126 (fees may apply).

Questions about your bill? Our bill guides explain all the parts and pieces. Check them out at alliantenergy.com/understandyourbill



Residential Gas Service

Rate: 030 - Gas Residential

Billed for: 34 Days

Billing Period	Meter Number	Current Reading	Previous Reading	Metered Units	Multiplier	Heat Factor	Usage
Dec 05 - Jan 08	454016174	3,594 Estimate	3,472 Estimate	122 CCF	1	1.054	129 therms

Non-Gas Cost		129.00 therms X \$0.34261	\$44.20
Gas Cost		129.00 therms X \$0.603230	\$77.82
Energy Efficiency Programs Charge		129.00 therms X \$-0.0271	-\$3.50
Non Standard Meter Alternative Fee			\$2.80
Basic Service Charge		34.000 Days X \$0.42735	\$14.53
Franchise Fee		\$135.85 X 3%	\$4.08
Total Current Charges			\$139.93

Gas Refund	Dec 13		
Refund Amount Gas		\$	-14.79
Franchise Fee		\$	-0.45
Credit Transfer Adjustment	Jan 13	\$	-3.43

Credit Remaining

Credit Transfer Adjustment	Jan 13	\$	6.31
Credit Transfer Adjustment	Jan 13	\$	22.82
Credit Transfer Adjustment	Jan 13	\$	3.43



31399-O-1303

alliantenergy.com Illuminate

Bright ideas to power your life

Interstate Power and Light/Wisconsin Power and Light We provide this natural gas safety information in fulfillment of federal requirements detailed in RP1162.



PowerHouse® TIP of the MONTH

Ring in the new year with energy-saving ideas

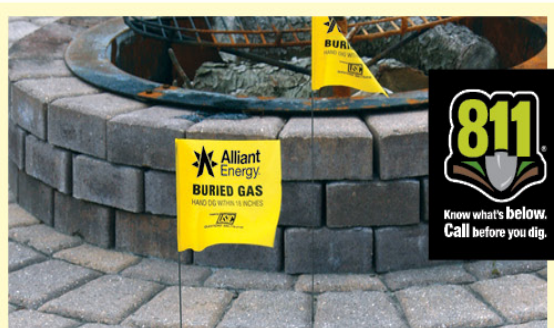
Stay comfortable and reduce energy use year-round with monthly tips from PowerHouse. With expert advice about seasonal topics like insulation, weatherization and much more, hosts Pete and Megan offer simple ways to save.

Visit powerhousetv.com/tips to explore this month's tip and more.

Never try to use a gas oven or range to heat a room

Only use gas ovens and ranges for their intended purpose. The appliance can use up all the available oxygen in the air, causing asphyxiation, carbon monoxide poisoning and even death.

Always have a professional install your gas appliances and heating and venting system. This ensures all connections are secure, all vent pipes and flues are clean and undamaged, and the appliance is adjusted properly and inspected according to local codes.



Be safe with firepits

Never place a firepit above a buried gas line. If the fire gets too hot, it could cause the natural gas line below it to leak or melt.

Visit 811beforeyoudig.com or call 811 to locate the underground utility lines on your property before you place your pit.



Use natural gas appliances safely

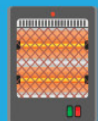
Most gas equipment installed today is designed to be energy efficient. Modern equipment uses electronic ignition systems that eliminate the need for continuously burning pilot lights. This saves energy and reduces dangers. If you have a pilot light out, be sure to call a professional for service.

As with any type of energy, the key to natural gas safety is a combination of education, common sense and a few rules:

- ▶ We recommend you work with a qualified professional to disconnect a gas appliance. Be sure to remove the connector and cap the line.
- ▶ Leave at least 18 inches of airflow distance around a gas furnace or water heater.
- ▶ Keep paints, papers, aerosol sprays and other flammables away from gas appliances.
- ▶ Maintain a clear space around gas appliances.
- ▶ Never store or stack boxes, laundry or other materials around a gas appliance's base.
- ▶ Make sure your appliance's vent hood, pipes and flues aren't blocked, cracked or corroded.
- ▶ Keep kids away from gas meters and appliances.
- ▶ Maintain gas pipes and never use them for unintended purposes like hanging clothes.
- ▶ Keep long sleeves, towels and potholders away from the open flame when using a gas range.
- ▶ Set the water heater thermostat to 120 degrees Fahrenheit. Always check the water temperature before placing a child in the bathtub. Never leave a child alone or with other young children in the bathtub.

Use space heaters safely

Keep at least 36 inches of clearance around space heaters and only use them on level and stable areas free of flammable or combustible materials that can easily ignite.



Take care of your appliances and equipment

A qualified professional should check your gas appliances annually. Inspections keep gas appliances safe and efficient, and reduce risks of carbon monoxide poisoning. You must clear vents for gas appliances after a major snow or ice storm to enable proper venting and prevent carbon monoxide accumulation. Install carbon monoxide detectors for added safety.

Learn to detect gas leaks

Because natural gas is colorless and unscented, we add a strong rotten-egg smell to help you detect a possible gas leak.

Here are three ways you can detect a leak:

1. Smell the odor of rotten eggs. If you don't know the scent, contact us at alliantenergy.com/gas for a free scratch-and-sniff card.
2. Hear hissing or whistling sounds near a gas appliance, meter or pipeline.
3. See blowing dirt, bubbling water or discolored vegetation in an otherwise green area.



Don't rely on your nose alone: Get a natural gas detector

Although we add a distinctive odor to natural gas as a safety precaution to assist in the detection of a leak, your sense of smell might not be enough to detect it.

- ▶ Strong smells in the area, like cooking or chemical odors, can mask the smell of natural gas.
- ▶ Prolonged exposure to the same smell can desensitize you to it (this is called olfactory fatigue).
- ▶ Certain conditions in the soil or pipes can cause the odorant to fade or be stripped out of the gas so it is not readily detectable.

Individuals with a known inability to smell are especially at risk. If this is you, don't take chances. Get a natural gas detector. Carefully follow the manufacturer's directions for operation, placement and maintenance.

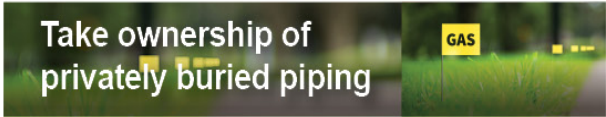


Know what kind of gas piping you have in your home or building

You may have corrugated stainless steel tubing (CSST) if your home or business was built after 1990 or you've had work done to your natural gas system.

If lightning strikes a structure containing CSST, it could travel along the structure's natural gas piping system and cause a leak or fire.

Have a professional inspect your building or home for CSST. If you find CSST, we recommend having a licensed electrician ensure it is bonded and grounded properly.



Take ownership of privately buried piping

Your home or business may have privately buried natural gas or fuel lines that run to a garage, grill or pool. These lines are not installed or maintained by Alliant Energy, and customers are responsible for them. We are responsible for the gas line leading to your meter, but any additional lines are your responsibility.

Customers must maintain operation and know the location of buried lines. A qualified technician should regularly inspect them for leaks. If the piping is metallic, inspect it for corrosion. Repair it if it is unsafe or shut off the flow of gas.

Prior to excavating, locate and mark the pipe. Excavating near the pipe should be done by hand.



If you suspect a gas leak, follow these do's and don'ts



Do's

- ▶ Make sure gas appliances are turned all the way off.
- ▶ IMMEDIATELY evacuate every one from the building or area.
- ▶ Leave the area and warn others to stay away.
- ▶ Call 1-800-ALLIANT from a remote location. Do not return until we confirm it is safe.
- ▶ If you hear gas hissing or blowing, which is a more serious issue, evacuate to a remote location and call 911.
- ▶ Contractors: Turn off and abandon equipment.



Don'ts

- ▶ Do not try to find or repair the leak or extinguish a burning gas leak.
- ▶ Do not move appliances or machinery.
- ▶ Do not start an engine of any kind.
- ▶ Do not strike matches or create a flame of any kind.
- ▶ Do not use a telephone or cellphone. These can ignite gases or vapors.
- ▶ Do not turn on or off any light, electrical switches or garage door openers. These also can ignite airborne gases.

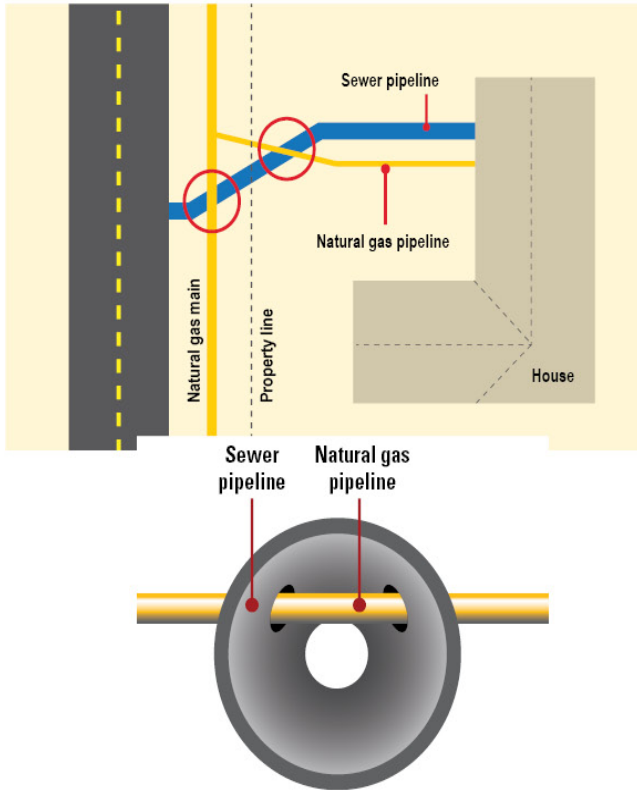


Keep your meters clear

To operate efficiently, natural gas equipment requires air for safe operation and venting. Do not place vents of household appliances directly above your gas meter. Snow and ice can damage or block natural gas meters and exhaust vents, especially after a major storm. Chimneys and vents on the roof or side of a building must be clear to allow proper venting and prevent accumulation of carbon monoxide or equipment malfunction.

Monitor impact of winter weather on your gas meter; after a storm:

- ▶ Carefully remove snow or debris using your hands or a broom. Kicking or using a shovel could cause damage.
- ▶ Remove icicles hanging from the roof or eaves above the meter.
- ▶ Stop dripping water or freezing rain from building up on the meter. The vent can become plugged when ice and snow melt during the day and refreeze at night.
- ▶ Avoid piling snow on the meter when shoveling or using a snow blower.



Sewer plugged? It might not be a simple clog

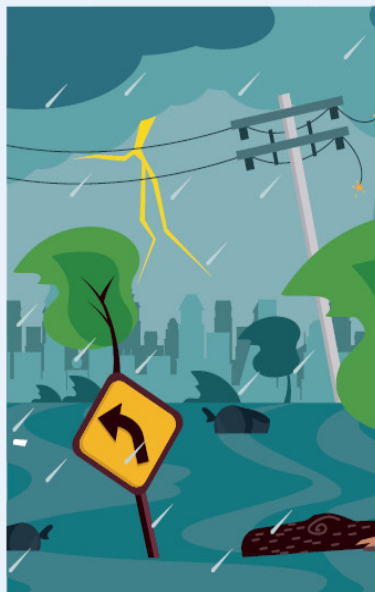
Sewer lines can get damaged when new power lines or natural gas pipes are installed underground.

Sometimes the two lines can intersect. This is called a cross bore.

The problem can go undetected for years. You could be injured trying to clear a clog from a cross bore.

If a cross bore is discovered:

- ▶ Stop operating any equipment.
- ▶ Evacuate yourself and others.
- ▶ Call 911 and the natural gas company from a remote location.
- ▶ Eliminate any ignition source.



Be prepared

Disasters can occur anytime, anywhere. Be proactive to minimize risks to people and damage to property.

Before a disaster:

- ▶ Prepare and practice a disaster plan.
- ▶ Have a professional inspect and repair any gas connections.
- ▶ Know how to turn off gas service at the meter, if instructed.

After a disaster:

- ▶ Replace appliances that have been submerged in water.
- ▶ Check for gas leaks. Evacuate and call us from a remote location if you suspect a leak.
- ▶ Call us to resume your gas service. Never do it yourself.

All information contained in this document is the general opinion of Alliant Energy and its affiliates and may not be beneficial in all circumstances. Alliant Energy and its affiliates are not liable in any manner whatsoever to any person or entity relying on or using the information contained in this document. Any person or entity choosing to rely on or use the information contained in this document does so at their own risk.

The energy savings referenced in this publication are estimates only. Actual savings may vary based on climate, home characteristics and

other factors.

Alliant Energy is the trade name of Alliant Energy Corporation and its principal utility subsidiaries Wisconsin Power and Light Co. and Interstate Power and Light Co.

